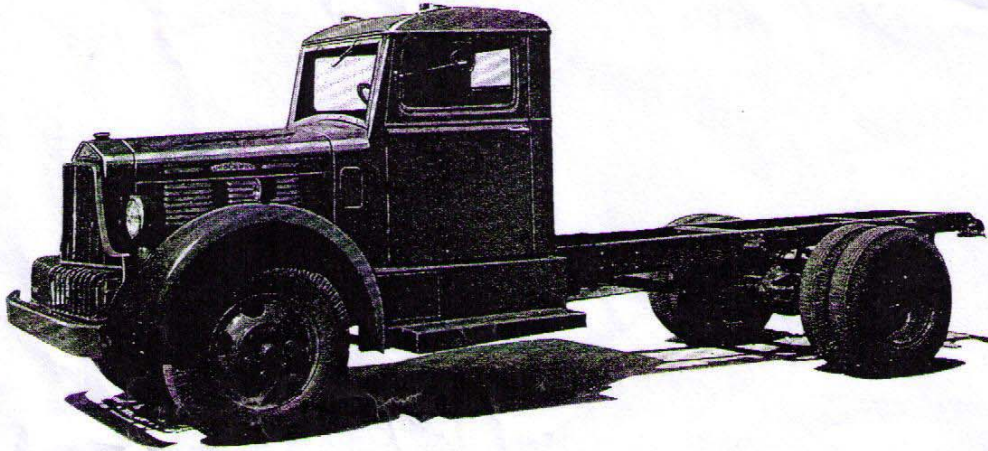


BROCKWAY TRUCKS



MODEL 88WH SPECIFICATIONS

GROSS VEHICLE WEIGHT — Chassis, Body and Payload - 17,000 lbs.

AXLE, FRONT — Timken 31000, I-Beam section, drop forged alloy steel, heat treated for maximum strength. Track 62½". Capacity on the tires 5,000 lbs.

AXLE, REAR — Timken E-100, Single-speed, full floating type. Capacity on the tires 13,000 lbs. Track 67". Gear Ratios - 5.833 and 6.8 to 1.

Available Rear Axle

Eaton 16500, Two-speed, full floating type.
Gear Ratios - 5.62/7.82 to 1.

NOTE - the above Front and Rear Axle Ratings are nominal and subject to operating conditions.

BRAKES, SERVICE — Hydraulic with diaphragm vacuum booster. Timken front brake size 16" dia. x 2¼". Timken rear brake size 15" dia. x 3½". Total brake lining area 362¼ sq. in. Eaton rear brake size 15" dia. x 4½". Total brake lining area (with Eaton rear) 416 sq. in.

BRAKE, HAND — Band brake 8" dia. x 2½". Lining area 62½ sq. in.

BUMPER, FRONT — Pressed steel channel, 6" section.

CAB — Brockway Model 41BF, with adjustable driver's seat. Two windshield wipers. Two rear vision mirrors. Two deck marker lights, dash light and dome light. Equipped with safety glass throughout.

CLUTCH — Lipe-Rollway 13" single dry disc. Effective lining area - 178 sq. in.

COOLING SYSTEM — Finned tube radiator - total water capacity 25 qts. Four blade fan, 20" diameter, driven by V-belt.

DRIVE LINE — Tubular shafts with Spicer Model 1410 needle bearing universal joints. Mounted on self-aligning ball bearings.

ELECTRICAL — Battery 6 volt, 17 plate, 120 amp. hr. rating. Generator 6 volt, 32 amp. output. Voltage and current regulator. Starting motor with foot switch. Parking lights, left hand stop and tail light. Sealed beam head lights with foot switch beam control. Dual electric horns. Front and rear turn signals.

ENGINE — Brockway-Continental Model 38-B, Six cylinders, L-head type. Displacement 290 cu. in. Bore and Stroke 3¾" x 4¾". Maximum Gross Brake Horsepower 104 @ 3200 R.P.M. Maximum Gross Torque 212 ft. lb. @ 1250 R.P.M. Compression ratio 6.3 to 1. Carburetor, 1½", updraft. Intake Manifold individually ported. Air Cleaner. Pressure lubrication. Crankcase oil capacity 7 qts. Governor not furnished unless specified.

FRAME — Pressed steel channel. Side rail section 8" x 3" x 0.26". Section Modulus 8.2 each rail, Pressed steel channel 8¼" x 3⅞" x ⅜" is furnished on wheelbases 182" and longer.

FUEL TANK — One 22 gallon tank under right running board shield.

SPRINGS — Front 10 leaves, 40" x 2½". Rear, main 17 leaves, 54" x 2½", auxiliary 6 leaves, 34" x 2½". Hotchkiss Drive, Radius Rod Drive is available.

STEERING — Ross TA-14, cam and double lever type. Ratio 20 - 18 - 20 to 1. Diameter of steering wheel 20".

TRANSMISSION — Warner T-98, four speeds forward and one reverse.

Reduction in first gear	6.40 to 1
Reduction in second gear	3.09 to 1
Reduction in third gear	1.69 to 1
Reduction in fourth gear	1.00 to 1
Reduction in reverse gear	7.82 to 1

Fuller, 5 speed, 5A33 or 5A330 transmission is available.

WHEELS & TIRES — Four cast spoke wheels and seven 6.5 - 5° rims. Standard - six 8.25-20, 10 p.r. tires and tubes. Optional - six Budd disc wheels, 6 stud.

WHEELBASE — Standard 188". Back of cab to center of rear axle 115". For longer or shorter wheelbases see chart on reverse side.

STANDARD EQUIPMENT — Crown front fenders, short running boards, front tow loops, radiator guard, hydraulic jack, set of tools, grease gun, speedometer, oil gauge, gasoline gauge, ammeter and heat indicator.

As we are constantly striving to improve Brockway Trucks, we reserve the right to change specifications and prices without notice.

BROCKWAY THE RIGHT WAY