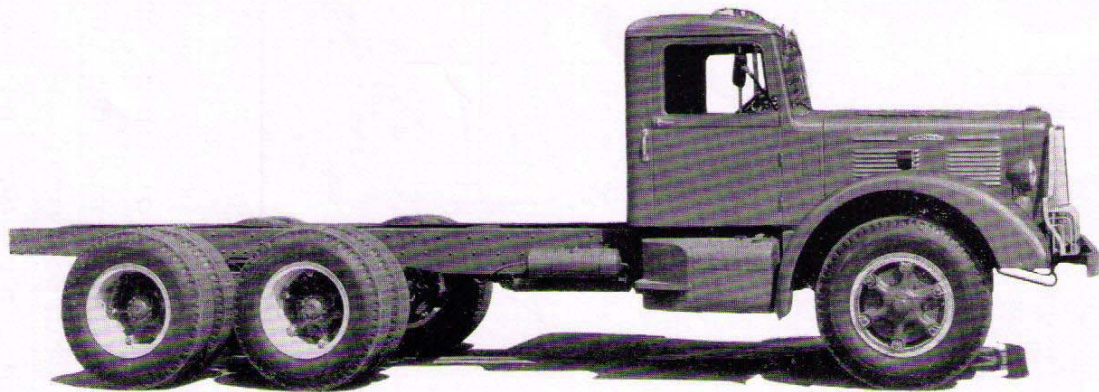




BROCKWAY TRUCKS



MODEL 260SF SPECIFICATIONS

TANDEM DUAL DRIVE - SIX WHEEL

GROSS VEHICLE WEIGHT — Chassis, Body and Payload - 60,000 lbs.

AXLE, FRONT — Shuler FE-10A-33, I-Beam section, drop forged alloy steel, heat treated for maximum strength, Track 70 $\frac{3}{4}$ ". Capacity on the tires 10,000 lbs.

AXLE, REAR — Timken SFDD-4600, Double Reduction tandem with inter axle differential and differential lockout. Bogie wheelbase 54". Capacity on the tires 50,000 lbs. Track 72 $\frac{1}{4}$ ". Gear Ratios - 8.07, 9.02 and 10.16 to 1.

BRAKES, SERVICE — Bendix-Westinghouse Air Brakes. 12 cu. ft. air compressor. Limiting valve for front wheel brakes. Low pressure indicator (buzzer type). Front brake size 17 $\frac{1}{4}$ " dia. x 3". Rear brake size 16 $\frac{1}{2}$ " dia. x 7". Total brake lining area 1089.5 sq. in.

BRAKES, HAND — Four shoe, 16" True-Stop disc on propeller shaft. Lining area 122 sq. in.

BUMPER, FRONT — Pressed steel channel, 6" section.

CAB — Brockway Model 41G, with adjustable driver's seat. Air Wing vents in doors. Two air windshield wipers. Two rear vision mirrors. Two deck marker lights, dash light and dome light. Equipped with safety glass throughout.

CLUTCH — Lipe-Rollway 15" single dry disc. Effective lining area 247 sq. in.

COOLING SYSTEM — Finned tube radiator - total water capacity 40 qts. Four blade fan, 23" diameter, driven by two V-belts.

DRIVE LINE — Tubular shafts with Spicer needle bearing universal joints. Sizes and location:

Main transmission to auxiliary transmission - Model 1600.
Auxiliary transmission to forward bogie axle - Model 1700.
Inter axle - Model 1700.

ELECTRICAL — Batteries, two 6 volt, 17 plate, 120 amp. hr. rating. Generator 12 volt, 55 amp. output. Voltage and current regulator. Starting motor with foot switch. Parking lights, left hand stop and tail light. Sealed beam head lights with foot switch beam control. Dual electric horns. Front and rear turn signals.

ENGINE — Brockway-Continental Model 48-BD. Six cylinders, overhead valve type. Displacement 572 cu. in. Bore and Stroke 4 $\frac{3}{4}$ " x 5 $\frac{3}{8}$ ". Maximum Gross Brake Horsepower 230 @ 2800 R.P.M. Maximum Gross Torque 484 ft. lb. @ 1400 R.P.M. Compression ratio 6.3 to 1. Carburetor 1 $\frac{5}{8}$ " Duplex (downdraft). Intake manifold individually ported. Air cleaner. Pressure lubrication. Two oil filters with replaceable elements. Oil cooler. Crankcase oil capacity 14 qts. Governor, mechanical type, set at 2700 R.P.M.

FRAME — Chrome manganese pressed steel channel, heat treated. Side rail section 8 $\frac{1}{4}$ " x 3 $\frac{1}{8}$ " x 3 $\frac{3}{8}$ ". Section Modulus, 12.01 each rail. Outside Fish Plates 12" x 3 $\frac{3}{8}$ ". Total Section Modulus, 16.1 each rail.

FUEL TANKS — Two 44 gallon payload saver type tanks. Other types and capacities of tanks are available.

SPRINGS — Front 16 leaves, 41" x 3". Rear 6 leaves, 54" x 5". Type of drive, Parallel Torque Rods with spherical rubber pivot bearings.

STEERING — Ross TA-71, cam and double lever type. Ratio 27 - 23 - 27 - to 1. Diameter of steering wheel 20".

TRANSMISSION - MAIN — Fuller, five speeds forward and one reverse, Model 5C65.

Reduction in first gear.....	8.08 to 1
Reduction in second gear.....	4.67 to 1
Reduction in third gear.....	2.62 to 1
Reduction in fourth gear.....	1.38 to 1
Reduction in fifth gear (direct).....	1.00 to 1
Reduction in reverse gear.....	8.12 to 1

TRANSMISSION - AUXILIARY — Fuller, three speeds forward, Model 3A65.

Over gear ratio.....	0.754 to 1
Direct.....	1.000 to 1
Reduction ratio.....	2.221 to 1

WHEELS & TIRES — Six cast spoke wheels and eleven 8.0 - 5° rims. Standard - ten 11.00-22, 12 p.r. tires and tubes. Available - ten 11.00-24, 12 p.r. tires and tubes. Optional - ten Budd disc wheels, 10 stud.

WHEELBASE — Standard 180". Back of cab to center of rear bogie 108". For longer or shorter wheelbases see chart on reverse side.

STANDARD EQUIPMENT — Crown front fenders, front tow loops, radiator guard, hydraulic jack, set of tools, grease gun, speedometer, engine tachometer, oil gauge, gasoline gauge, low pressure air gauge, ammeter and heat indicator.

As we are constantly striving to improve Brockway Trucks, we reserve the right to change specifications and prices without notice.

BROCKWAY THE RIGHT WAY