

Brockway Model 258T

AVAILABLE OPTIONAL EQUIPMENT

REAR AXLE:

Model R454 two speed
Full floating type
Capacity on tires ██████████ 24,000 lbs.
Gear ratio 5.43/7.39
Total brake lining area including F332 front axle - 712.25

Model R451 double reduction
Full floating type
Capacity on tires 24,000 lbs.
6.10, 7.21 and 7.69 gear ratios
Total brake lining area including F332 front axle - 694.75

Model R450 single reduction
Full floating type
Capacity on tires 24,000 lbs.
5.29, 6.14 gear ratios
Total brake lining area including F332 front axle - 694.75

FUEL TANKS - At Extra Cost

70 gal. step tanks in place of standard 50 gal.

STEERING - At Extra Cost

Power - Hydraulic

DRIVE - At Extra Cost : Radius Rod Drive in place of Hotchkiss

TRANSMISSION:

Model T530 Direct in 5th (Five speeds forward - One reverse.)

Reduction in first gear 8.08 to 1
Reduction in second gear 4.67 to 1
Reduction in third gear 2.62 to 1
Reduction in fourth gear 1.69 to 1
Reduction in fifth gear 1.00 to 1
Reduction in reverse gear 8.12 to 1

Roadranger Model T535 and T536 - At Extra Cost

Note: Substitution of R450 rear axle obligatory with Roadranger Transmission.

WHEELS AND TIRES - At Extra Cost

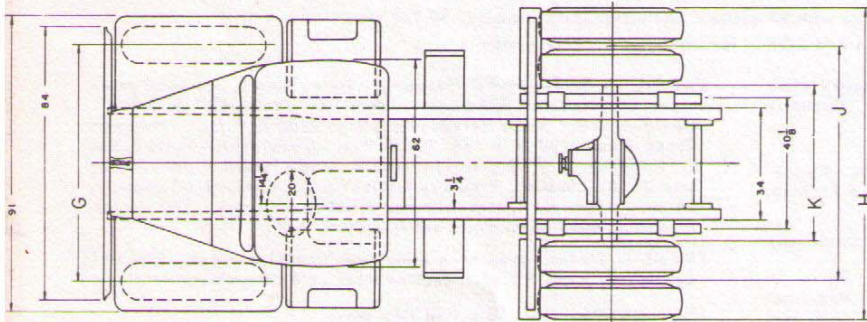
Six 11.00 X 20 or 11.00 X 22 - 12 p. r. tire and tubes

WHEELBASE:

Longer wheel bases available - At Extra Cost
Bumper to back of cab 4" longer with extended bumper and radiator guard - Extra cost.

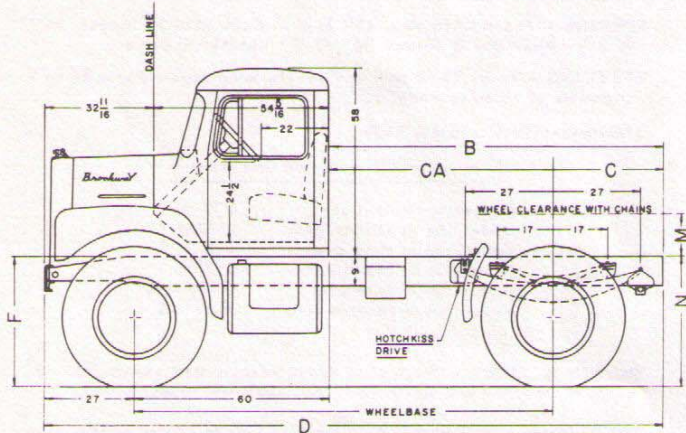


CHASSIS DIAGRAM



KEY TO SYMBOLS

CA - Rear of cab to centerline of rear axle
B - Rear of cab to rear end of frame
C - Centerline of rear axle to rear end of frame
D - Overall Length
G - Front axle tread
J - Rear axle tread
H - Width over rear tires
K - Width inside rear tires
L - Tire centerline spacing
F - Frame height at centerline of front axle
N - Frame height at centerline of rear axle
M - Minimum frame to wheelhouse, with chains



WHEELBASE	CA	B	C	D
129"	69"	103"	34"	190"

TIRES	F		N		M
	LIGHT	LOAD	LIGHT	LOAD	
10.00-22	37-3/8"	35-7/8"	40-1/8"	36-1/8"	13"
11.00-20	36-3/4"	35-1/4"	39-1/2"	35-1/2"	13"
11.00-22	37-3/4"	36-1/4"	40-1/2"	36-1/2"	14"

TIRES	G		J		H		K		L	
	SPOKE	DISC	SPOKE	DISC	SPOKE	DISC	SPOKE	DISC	SPOKE	DISC
10.00-22	74-5/8"	74-7/8"	72"	71-3/4"	96"	96"	47-3/4"	47-7/8"	13-1/2"	13-1/8"
11.00-20	74-1/8"	74"	72"	71-3/4"	96"	96"	46-3/4"	46-3/4"	14"	13-3/4"
11.00-22	74-1/8"	74"	72"	71-3/4"	96"	96"	46-3/4"	46-3/4"	14"	13-3/4"

BROCKWAY MOTOR TRUCKS - Division of Mack Trucks, Inc.