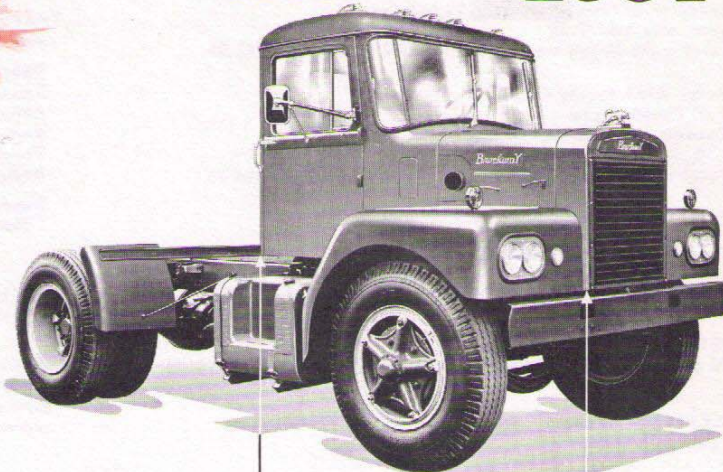


# Brockway HUSKIE

MODEL

258T



87" B. B. C.

## MODEL 258T TRACTOR SPECIFICATIONS

GROSS COMBINATION WEIGHT - Tractor, Trailer, and Payload - 65,000 lbs.

TRACTOR AND CAB WEIGHT - with 88 gallons fuel oil in tanks - approx. 10,700 lbs.

STANDARD SPECIFICATIONS FOLLOW - for Options see reverse side.

**AXLE, FRONT** - Model F332 "I Beam" section, drop forged alloy steel, heat treated for maximum strength. Track 74". Capacity on the tires 10,000 lbs.

**AXLE, REAR** - Model R454 two speed, full floating type. Capacity on the tires 24,000 lbs. Gear Ratios 6.14/8.36 and 6.71/9.13.

NOTE - Axle Ratings - Nominal - subject to operating conditions.

**BRAKES, SERVICE** - Bendix-Westinghouse Air Brakes. 7 $\frac{1}{4}$  cu. ft. air compressor. Limiting valve for front wheel brakes. Reservoir check valve. Tractor breakaway valve. Trailer connections and hose. Hand control valve. Front Brakes 16 $\frac{1}{4}$ " dia. X 3 $\frac{1}{2}$ ". Rear Brakes 16 $\frac{1}{2}$ " dia. X 7". Total brake lining area 712.25 sq. in.

**BRAKE, HAND** - Two Shoe, 16" True-Stop disc on propeller shaft. Lining area 61 sq. in.

**BUMPER, FRONT** - Pressed steel channel 8" section.

**CAB** - Brockway Model 60A-Deluxe safety-view all steel, rubber mounted. Fully insulated with adjustable driver's seat. Air wing vents in doors. Two air windshield wipers. Two rear vision mirrors. Two deck marker lights. Three deck identification lights. Dash and dome lights. Safety glass throughout.

**CLUTCH** - Lipe-Rollway 15" single-plate dry disc. Effective lining area 247 sq. in.

**COOLING SYSTEM** - Finned tube radiator. 40 qt. water capacity. Four blade 23" fan, driven by two V-belts. Automatic radiator shutters.

**DRIVE LINE** - Tubular shafts with model 1600 needle bearing universal joints.

**ELECTRICAL** - Two batteries 6 Volt, 17 plate, 120 amp. hr. rating each. Generator 12 Volt, 50 amp. output. Voltage and current regulator. Starting motor 12 Volt with key switch starting. Parking lights, two stop and tail lights. Dual sealed beam headlights with foot switch beam control. Dual electric horns. Trailer light plug. Front turn signals only.

**ENGINE** - Model 48-FD Gasoline. Six cylinders, overhead valve type. Displacement 572 cu. in. Bore and stroke 4 $\frac{3}{4}$ " X 5-3/8". Maximum Gross Brake Horsepower 230 at 2800 R. P. M. Maximum Gross Torque 484 ft. lb. at 1400 R. P. M. Compression Ratio 6.3 to 1. Carburetor 1 $\frac{1}{4}$ " Duplex (downdraft). Intake manifold individually ported. Air cleaner. Pressure lubrication. Crankcase oil capacity 14 qts. Two oil filters with replaceable elements. Oil cooler. Governor, mechanical type, set at 2700 R. P. M.

**FRAME** - Chrome manganese steel heat treated channel. Side rail section 9" X 3 $\frac{1}{4}$ " X  $\frac{1}{4}$ ". Section Modulus 9.76 each rail.

**FUEL TANKS** - Two 50 gallon step tanks.

**SPRINGS** - Front 11 leaves, 41" X 3". Rear Main 16 leaves, 54" X 3". Auxiliary 8 leaves 34" X 3" Hotchkiss Drive.

**STEERING** - Model TA70 cam and double lever type. Ratio 24 to 1. Diameter of steering wheel 22".

**TRANSMISSIONS** - Model T531

Five speeds forward and One reverse

Reduction in first gear	6.37 to 1
Reduction in second gear	3.40 to 1
Reduction in third gear	1.74 to 1
Reduction in fourth gear	1.00 to 1
Reduction in fifth gear	0.788 to 1
Reduction in reverse gear	6.40 to 1

**WHEELS & TIRES** - Four cast spoke wheels and seven 7.5 - 5 $\phi$  rims. Standard - six 10.00/22-12 p.r. tires and tubes.

**WHEELBASE** - Standard 129". Back of cab to center of rear axle 69". (Longer or shorter wheelbases are available.) SEE CHART ON REVERSE SIDE.

**STANDARD EQUIPMENT** - Front fenders with tread plate, quarter rear fenders, front tow eyes, front shock absorbers, wood frame liners over rear axle, hydraulic jack, grease gun, speedometer, engine tachometer, oil gauge, fuel gauge, low pressure air indicator, ammeter and heat indicator.

As we are constantly striving to improve Brockway Trucks, we reserve the right to change specifications and prices without notice.

**Brockway** ...DESIGNED AND BUILT TO FIT YOUR NEEDS

MODEL 258T TRACTOR