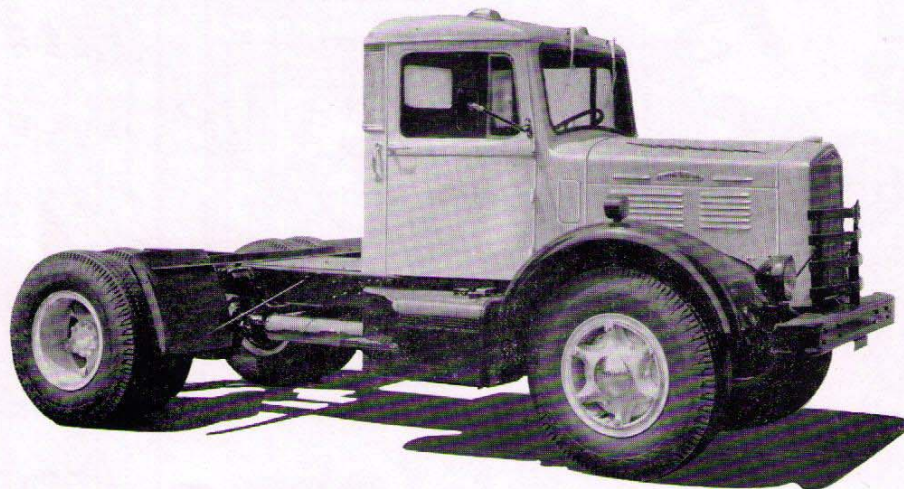




BROCKWAY TRUCKS



MODEL 155W TRACTOR SPECIFICATIONS

GROSS COMBINED WEIGHT — Tractor, Trailer and Payload - 55,000 lbs.

TRACTOR AND CAB WEIGHT (Standard) — with 88 gallons gasoline in tanks - approx. 8,875 lbs.

AXLE, FRONT — Timken FD-901, I-Beam section, drop forged alloy steel, heat treated for maximum strength. Track $66\frac{1}{4}$ ". Capacity on the tires 9,000 lbs.

AXLE, REAR — Eaton 20501, Two-speed, full floating type. Capacity on the tires 23,000 lbs. Track $71\frac{5}{8}$ ". Gear Ratios - 5.43/7.39, 6.14/8.36 or 6.71/9.13 to 1.

Available Rear Axles

Timken R-110, Single-speed, full floating type. Gear Ratios - 5.29, 6.17, 7.4 or 8.38 to 1.

Timken R-210, Double Reduction, full floating type. Gear Ratios - 5.91, 6.38, 7.03 or 7.79 to 1.

NOTE - Axle Ratings are nominal and subject to operating conditions.

BRAKES, SERVICE — Bendix-Westinghouse Air Brakes. $7\frac{1}{4}$ cu. ft. air compressor. Limiting valve for front wheel brakes. Low pressure indicator (buzzer type). Trailer connections and hose. Hand control valve. Timken front brake size 16" dia. x $2\frac{1}{4}$ ". Eaton 20501 rear axle brake size $16\frac{1}{2}$ " dia. x 7". Total brake lining area (with 20501 axle) 626.75 sq. in. Timken R series rear axle brake size $16\frac{1}{2}$ " dia. x 7". Total brake lining area (with R axles) 609.25 sq. in.

BRAKE, HAND — Two shoe, 14" Tru-Stop disc on propeller shaft. Lining area 45 sq. in.

BUMPER, FRONT — Pressed steel channel, 6" section.

CAB — Brockway Model 41G, with adjustable driver's seat. Air Wing vents in doors. Rear quarter vent windows. Two air windshield wipers. Two rear vision mirrors. Two deck marker lights, dash light and dome light. Equipped with safety glass throughout.

CLUTCH — Lipe-Rollway 14" single dry disc. Effective lining area 214 sq. in.

COOLING SYSTEM — Finned tube radiator - total water capacity 30 qts. Four blade fan, 21" diameter, driven by two V-belts.

DRIVE LINE — Tubular shafts with Spicer Model 1500 needle bearing universal joints. Mounted on self-aligning ball bearings.

ELECTRICAL — Battery 6 volt, 17 plate, 120 amp. hr. rating. Generator 6 volt, 50 amp. output. Voltage and current regulator. Starting motor with foot switch. 12 volt electrical equipment is available. Parking lights, guarded left hand stop and tail light. Sealed beam head lights with foot switch beam control. Dual electric horns. Trailer light plug. Front turn signals only.

ENGINE — Brockway-Continental Model 42-BD. Six cylinders, L-head type. Displacement 427 cu. in. Bore and Stroke $4\text{-}5\frac{1}{16}$ " x $4\text{-}7\frac{7}{8}$ ". Maximum Gross Brake Horsepower 165 @ 3000 R.P.M. Maximum Gross Torque 352 ft. lb. @ 1600 R.P.M. Compression ratio 6.47 to 1. Carburetor $1\frac{5}{8}$ " Duplex (downdraft). Intake manifold individually ported. Air Cleaner. Pressure lubrication. Crankcase oil capacity 8 qts. Oil filter with replaceable element. Governor, set at 3000 R.P.M.

FRAME — Chrome manganese steel, heat treated channel. Side rail section $8\frac{1}{8}$ " x $3\frac{1}{16}$ " x $\frac{5}{16}$ ". Section Modulus 9.9 each rail.

FUEL TANKS — Two 44 gallon step tanks. Saddle tanks are available.

SPRINGS — Front 12 leaves, 40 " x $2\frac{1}{2}$ ". Rear, main 13 leaves, 54 " x 3 ", auxiliary 8 leaves, 34 " x 3 ". Optional, main rear 16 leaves, (no auxiliary) 54 " x 3 ". Hotchkiss Drive. (Radius Rod Drive is available.)

STEERING — Ross TA66, cam and double lever type. Ratio 23.4 - 19.5 - 23.4 to 1. Diameter of steering wheel 20".

TRANSMISSION — Fuller, five speeds forward and one reverse.

	Overdrive Model 5A430	or	Direct in 5th Model 5A43
Reduction in first gear.....	6.52 to 1.....		8.03 to 1
Reduction in second gear.....	3.33 to 1.....		4.61 to 1
Reduction in third gear.....	1.77 to 1.....		2.46 to 1
Reduction in fourth gear.....	1.00 to 1.....		1.41 to 1
Reduction in fifth gear.....	0.771 to 1.....		1.00 to 1
Reduction in reverse gear.....	6.50 to 1.....		8.00 to 1

WHEELS & TIRES — Four cast spoke wheels and seven 7.5 - 5° rims. Standard - six 10.00-20, 12 p.r. tires and tubes. Available - six 10.00-22 or 11.00-20 12 p.r. tires and tubes. Optional - six Budd disc wheels, 10 stud.

WHEELBASE — Standard $135\frac{1}{2}$ ". Back of cab to center of rear axle 69". Longer or shorter wheelbases are available.

STANDARD EQUIPMENT — Crown front fenders, quarter rear fenders, front tow hooks, radiator guard, wood frame liners over rear axle, hydraulic jack, grease gun, speedometer, oil gauge, gasoline gauge, low pressure air indicator, ammeter and heat indicator.

As we are constantly striving to improve Brockway Trucks, we reserve the right to change specifications and prices without notice.

BROCKWAY THE RIGHT WAY