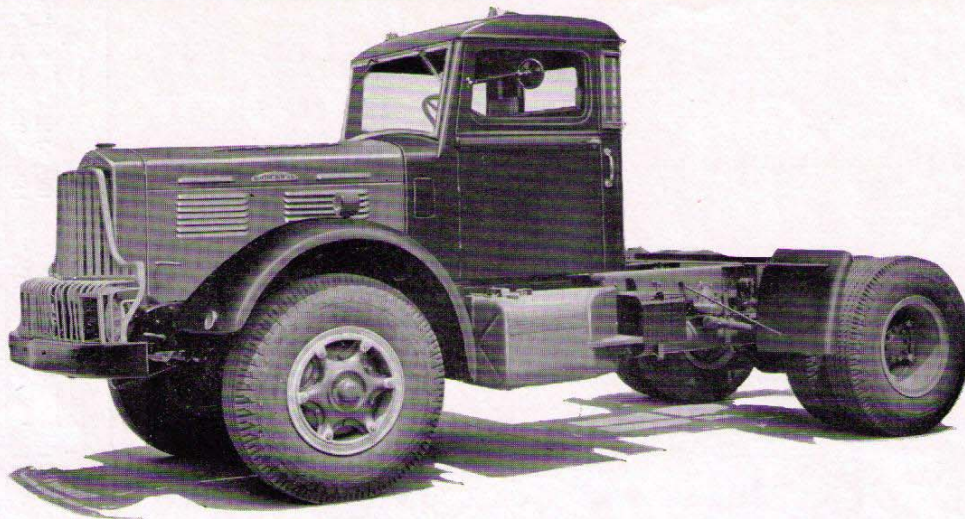




BROCKWAY TRUCKS



MODEL 154WHS TRACTOR SPECIFICATIONS

GROSS COMBINED WEIGHT — Tractor, Trailer and Payload - 60,000 lbs.

TRACTOR AND CAB WEIGHT — with 88 gallons gasoline in tanks - approx. 10,555 lbs.

AXLE, FRONT — Timken FD-900, I-Beam section, drop forged alloy steel, heat treated for maximum strength. Track 66 $\frac{1}{4}$ ". Capacity on the tires 9,000 lbs.

AXLE, REAR — Eaton 22501, Two-speed, full floating type. Capacity on the tires 22,000 lbs. Track 71-11/16". Gear Ratios - 5.43/7.39, 6.14/8.36 or 6.71/9.14 to 1.

Available Rear Axles

Timken R-110, Single-speed, full floating type.
Gear Ratios - 6.16, 6.83 or 7.4 to 1.
Timken R-210, Double Reduction, full floating type.
Gear Ratios - 5.91, 6.38, 7.03, 7.79, 8.04, 8.38 or 9.23 to 1.

NOTE - the above Front and Rear Axle Ratings are nominal and subject to operating conditions.

BRAKES, SERVICE — Bendix-Westinghouse Air Brakes. 7 $\frac{1}{4}$ cu. ft. air compressor. Limiting valve for front wheel brakes. Low pressure indicator (buzzer type). Trailer connections and hose. Hand control valve. Timken front brake size 16" dia. x 2 $\frac{1}{4}$ ". Eaton rear brake size 16 $\frac{1}{2}$ " dia. x 7". Total brake lining area 626.75 sq. in. Timken rear brake size 16 $\frac{1}{2}$ " dia. x 7". Total brake lining area (with Timken rear) 609.25 sq. in.

BRAKE, HAND — Two shoe, 14" True-Stop disc on propeller shaft. Lining area 45 sq. in.

BUMPER, FRONT — Pressed steel channel, 6" section.

CAB — Brockway Model 41F, with adjustable driver's seat. Rear quarter vent windows. Two air windshield wipers. Two rear vision mirrors. Two deck marker lights, dash light and dome light. Equipped with safety glass throughout.

CLUTCH — Lipe-Rollway 14" single dry disc. Effective lining area 214 sq. in.

COOLING SYSTEM — Finned tube radiator - total water capacity 40 qts. Four blade fan, 23" diameter, driven by two V-belts.

DRIVE LINE — Tubular shafts with Spicer Model 1500 needle bearing universal joints. Mounted on self-aligning ball bearings.

ELECTRICAL — Battery 6 volt, 19 plate, 150 amp. hr. rating. Generator 6 volt, 50 amp. output. Voltage and current regulator. Starting motor with foot switch. 12 volt electrical equipment is available. Parking lights, guarded left hand stop and tail light. Sealed beam head lights with foot switch beam control. Dual electric horns. Trailer light plug. Front turn signals only.

ENGINE — Brockway-Continental Model 46-B. Six cylinders, overhead valve type. Displacement 513 cu. in. Bore and Stroke 4 $\frac{1}{2}$ " x 5 $\frac{3}{8}$ ". Maximum Gross Brake Horsepower 169 @ 2800 R.P.M. Maximum Gross Torque 400 ft. lb. @ 1200 R.P.M. Compression ratio 5.9 to 1. 2" carburetor, updraft. Intake manifold individually ported. Air Cleaner. Pressure lubrication. Crankcase oil capacity 14 qts. Two oil filters with replaceable elements. Oil Cooler. Governor, mechanical, set at 2700 R.P.M.

FRAME — Pressed steel, heat treated channel. Side rail section 8 $\frac{1}{4}$ " x 3 $\frac{1}{8}$ " x 3 $\frac{3}{8}$ ". Section Modulus 12.01 each rail.

FUEL TANKS — Two 44 gallon payload saver type tanks. Saddle tanks are available.

SPRINGS — Front 23 leaves, 40" x 2 $\frac{1}{2}$ ". Rear, main 16 leaves, 54" x 3", auxiliary 9 leaves, 34" x 3". Hotchkiss Drive. (Radius Rod Drive is available.)

STEERING — Ross TA-66, cam and double lever type. Ratio 23.4 - 19.5 - 23.4 to 1. Diameter of steering wheel 20".

TRANSMISSION — Fuller, five speeds forward and one reverse.

	Standard Overdrive Model 5A620	Optional - Direct in 5th Model 5A62
Reduction in first gear.....	7.07 to 1	8.07 to 1
Reduction in second gear.....	3.50 to 1	4.67 to 1
Reduction in third gear.....	1.72 to 1	2.62 to 1
Reduction in fourth gear.....	1.00 to 1	1.38 to 1
Reduction in fifth gear.....	0.776 to 1	1.00 to 1
Reduction in reverse gear.....	7.11 to 1	8.12 to 1

WHEELS & TIRES — Four cast spoke wheels and seven 7.5 - 5° rims. Standard - six 10.00-22, 12 p.r. tires and tubes. Available - six 10.00-20, or 11.00-20, 12 p.r. tires and tubes. Optional - six Budd disc wheels, 10 stud.

WHEELBASE — Standard 144". Back of cab to center of rear axle 69 $\frac{1}{2}$ ". Longer or shorter wheelbases are available.

STANDARD EQUIPMENT — Crown front fenders, quarter rear fenders, front tow loops, front shock absorbers, radiator guard, wood frame liners over rear axle, hydraulic jack, set of tools, grease gun, speedometer, oil gauge, gasoline gauge, low pressure air gauge, ammeter and heat indicator.

As we are constantly striving to improve Brockway Trucks, we reserve the right to change specifications and prices without notice.

BROCKWAY THE RIGHT WAY