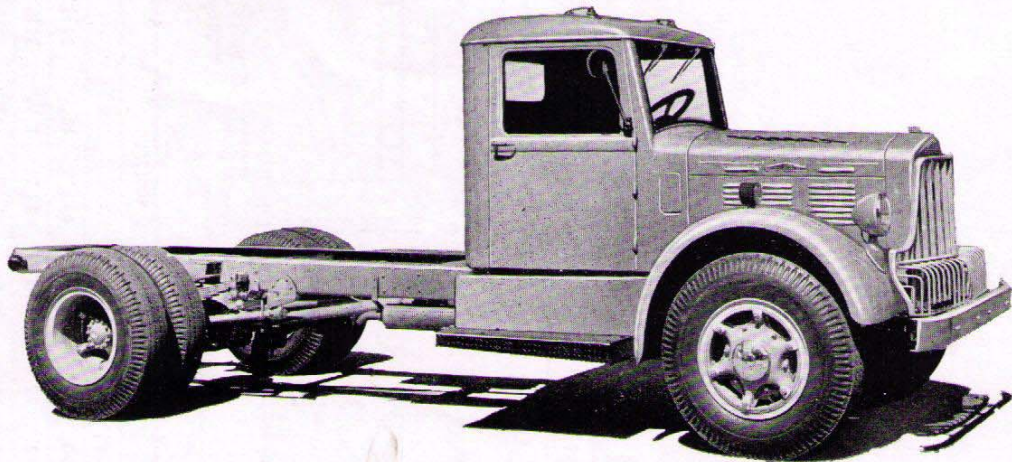




BROCKWAY TRUCKS



MODEL 148W SPECIFICATIONS

GROSS VEHICLE WEIGHT — Chassis, Body and Payload - 28,000 lbs.

AXLE, FRONT — Timken FD-900, I-Beam section, drop forged alloy steel, heat treated for maximum strength. Track 66 $\frac{1}{4}$ ". Capacity on the tires 9,000 lbs.

AXLE, REAR — Timken Q-100, Single-speed, full floating type. Capacity on the tires 20,000 lbs. Track 71 $\frac{5}{8}$ ". Gear Ratios - 6.16, 6.83 or 7.8 to 1.

Available Rear Axles

Eaton 18802, Two-speed, full floating type.

Gear Ratios - 6.53/8.87 to 1.

Timken Q-200, Double Reduction, full floating type.

Gear Ratios - 7.64 or 8.38 to 1.

NOTE - the above Front and Rear Axle Ratings are nominal and subject to operating conditions.

BRAKES, SERVICE — Hydraulic with vacuum booster. Timken front brake size 16" dia. x 2 $\frac{1}{4}$ ". Timken rear brake size 16 $\frac{1}{2}$ " dia. x 6". Total brake lining area 500 sq. in. Eaton rear brake size 16" dia. x 6". Total brake lining area (with Eaton rear) 540.5 sq. in. Air brakes available.

BRAKE, HAND — Two shoe, 14" True-Stop disc on propeller shaft. Lining area 45 sq. in.

BUMPER, FRONT — Pressed steel channel, 6" section.

CAB — Brockway Model 41F, with adjustable driver's seat. Rear quarter vent windows. Two windshield wipers. Two rear vision mirrors. Two deck marker lights, dash light and dome light. Equipped with safety glass throughout.

CLUTCH — Lipe-Rollway 14" single dry disc. Effective lining area 214 sq. in.

COOLING SYSTEM — Finned tube radiator - total water capacity 30 qts. Four blade fan, 21" diameter, driven by two V-belts.

DRIVE LINE — Tubular shafts with Spicer Model 1500 needle bearing universal joints. Mounted on self-aligning ball bearings.

ELECTRICAL — Battery 6 volt, 17 plate, 120 amp. hr. rating. Generator 6 volt, 32 amp. output. Voltage and current regulator. Starting motor with foot switch. Parking lights, left hand stop and tail light. Sealed beam head lights with foot switch beam control. Dual electric horns. Front and rear turn signals.

ENGINE — Brockway-Continental Model 42-BX. Six cylinders, L-head type. Displacement 427 cu. in. Bore and Stroke 4-5/16" x 4-7/8". Maximum Gross Brake Horsepower 145 @ 2800 R.P.M. Maximum Gross Torque 332 ft. lb. @ 1100 R.P.M. Compression ratio 6.73 to 1. 2" carburetor, updraft. Intake manifold individually ported. Air Cleaner. Pressure lubrication. Crankcase oil capacity 8 qts. Oil filter with replaceable element. Governor, Velocity type, set at 3000 R.P.M.

FRAME — Pressed steel channel. Side rail section 8 $\frac{1}{4}$ " x 3 $\frac{3}{8}$ " x 3 $\frac{3}{8}$ ". Section Modulus 12.01 each rail.

FUEL TANK — One 22 gallon tank under right running board shield. Payload sever type tanks are available.

SPRINGS — Front 11 leaves, 40" x 2 $\frac{1}{2}$ ". Rear, main 12 leaves, 54" x 3", auxiliary 7 leaves, 34" x 3". Radius Rod Drive.

STEERING — Ross TA-66, cam and double lever type. Ratio 23.4 - 19.5 - 23.4 to 1. Diameter of steering wheel 20".

TRANSMISSION — Fuller, five speeds forward and one reverse.

	Standard Overdrive Model 5A430	Optional - Direct in 5th Model 5A43
Reduction in first gear.....	6.52 to 1	8.03 to 1
Reduction in second gear.....	3.33 to 1	4.61 to 1
Reduction in third gear.....	1.77 to 1	2.46 to 1
Reduction in fourth gear.....	1.00 to 1	1.41 to 1
Reduction in fifth gear.....	0.771 to 1	1.00 to 1
Reduction in reverse gear.....	6.50 to 1	8.00 to 1

WHEELS & TIRES — Four cast spoke wheels and seven 7.5 - 5 ϕ rims. Standard - six 10.00-20, 12 p.r. tires and tubes. Available - six 10.00-22, or 11.00-20, 12 p.r. tires and tubes. Optional - six Budd disc wheels, 10 stud.

WHEELBASE — Standard 188". Back of cab to center of rear axle 115". For longer or shorter wheelbases see chart on reverse side.

STANDARD EQUIPMENT — Crown front fenders, short running boards, front tow loops, radiator guard, hydraulic jack, set of tools, grease gun, speedometer, oil gauge, gasoline gauge, ammeter and heat indicator.

As we are constantly striving to improve Brockway Trucks, we reserve the right to change specifications and prices without notice.

BROCKWAY THE RIGHT WAY